



# Pregnancy

A rapid self-test for the detection of human chorionic gonadotropin (hCG) in urine. The test is sensitive enough to detect pregnancy up to 6 days early.

The Pregnancy Test is a rapid lateral flow test for the qualitative detection of human chorionic gonadotropin (hCG) in urine to aid in the early detection of pregnancy.

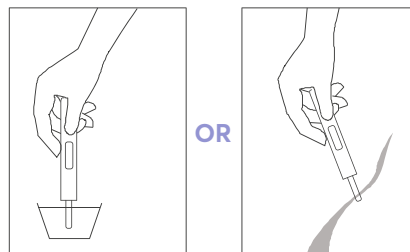
The test utilises a combination of antibodies including monoclonal hCG antibodies to selectively detect elevated levels of hCG. The assay is conducted by adding urine to the hydrophilic stick and obtaining the result from the coloured lines.

The Pregnancy Test is designed for early detection, making it the most sensitive test available with results up to 6 days before your missed period.



## Instructions

- 1 Remove the cap and place the absorbent tip in your urine stream or in a collected urine sample for 15 seconds.
- 2 Remove the tip from the urine, replace the cap and place the test stick on a flat surface.
- 3 After 3 minutes, your result can be read.  
Do not interpret the results after 10 minutes.



### Read the results

#### POSITIVE RESULT

Two distinct coloured lines appear. One line should be in the control line region (C) and another line should be in the test line region (T). One line may be lighter than the other; they do not have to match. This indicates pregnancy.



#### NEGATIVE RESULT

One coloured line appears in the control line region (C). No line appears in the test line region (T). This indicates no pregnancy.



#### INVALID RESULT

The result is invalid if no coloured line appears in the control line region (C), even if a line appears in the test line region (T). You should repeat the test with another midstream test.

